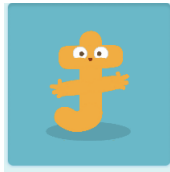


汉字偏旁部首



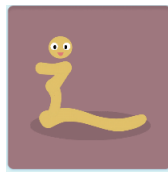
门字框



提手旁



草字头



走之底



竹字头

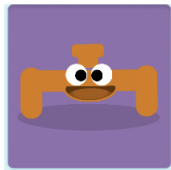


人字头

--	--	--	--	--	--



女字旁



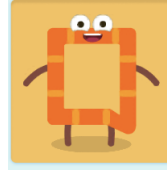
宝盖头



单人旁



斜玉旁

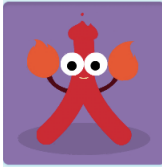


国字框



三撇儿

--	--	--	--	--	--



火字旁



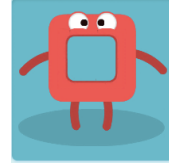
提土旁



两点水



右耳刀



口字旁



言字旁

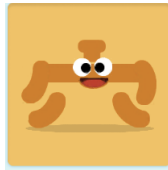
--	--	--	--	--	--



心字底



绞丝旁



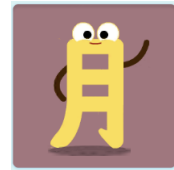
穴宝盖



日字旁



左耳刀



月字旁

--	--	--	--	--	--



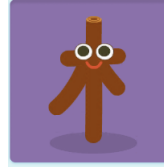
尸字头



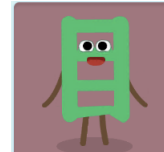
双人旁



禾木旁



木字旁



目字旁



三点水

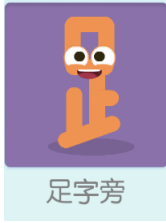
--	--	--	--	--	--



米字旁



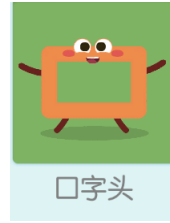
力字旁



足字旁



竖心旁



口字头



反文旁

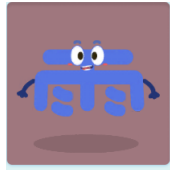
--	--	--	--	--	--



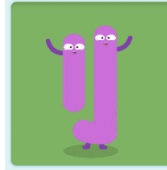
又字旁



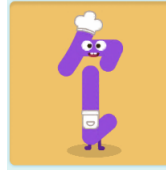
四点底



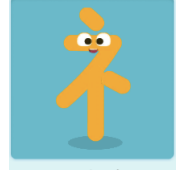
雨字头



立刀旁



食字旁



示字旁

--	--	--	--	--	--



石字旁



厂字头



广字旁



金字旁



反犬旁



舟字旁

--	--	--	--	--	--



车字旁



虫字旁

--	--	--	--	--	--